

Stacking doors **SPACELITE®**

As unique as your business



INTELLIGENT
PROFESSIONELL
SOLIDE

BUTZBACH
DOORS+FAÇADES



The best door?
One that suits my
business perfectly!



Stacking doors SPACELITE®

Economic efficiency in evidence



These days, most companies need to ensure that their processes are seamless and sustainable. If you also have special requirements for the design, safety or format, SPACELITE offers a suitable solution. This is because SPACELITE is more than just a door: It is perfectly integrated into the architecture of the building, ensures efficient operating processes, protects your employees and assets and helps to save costs.

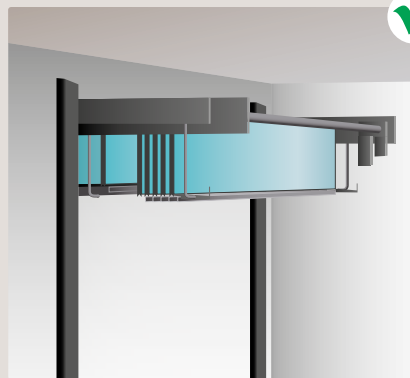
A shining example of door technology

With its probably unique combination of opening technology and door panels made from transparent fibreglass, Butzbach has created an entirely new type of door. Innovative design and individual features make this one of the most flexible door systems worldwide. We will personally advise you, analyse your requirements and help you find a solution that suits you.

Synonymous with reliability

The hard-wearing door technology and high "Made in Germany" quality form the basis for Butzbach's proverbial reliability and long service life. Nevertheless the focus is on economic efficiency: There are no high-maintenance or high-cost components, thus reducing your running costs to a minimum.

The stacking door SPACELITE® concept:



Space-saving, hard-wearing and ideal for large doors:

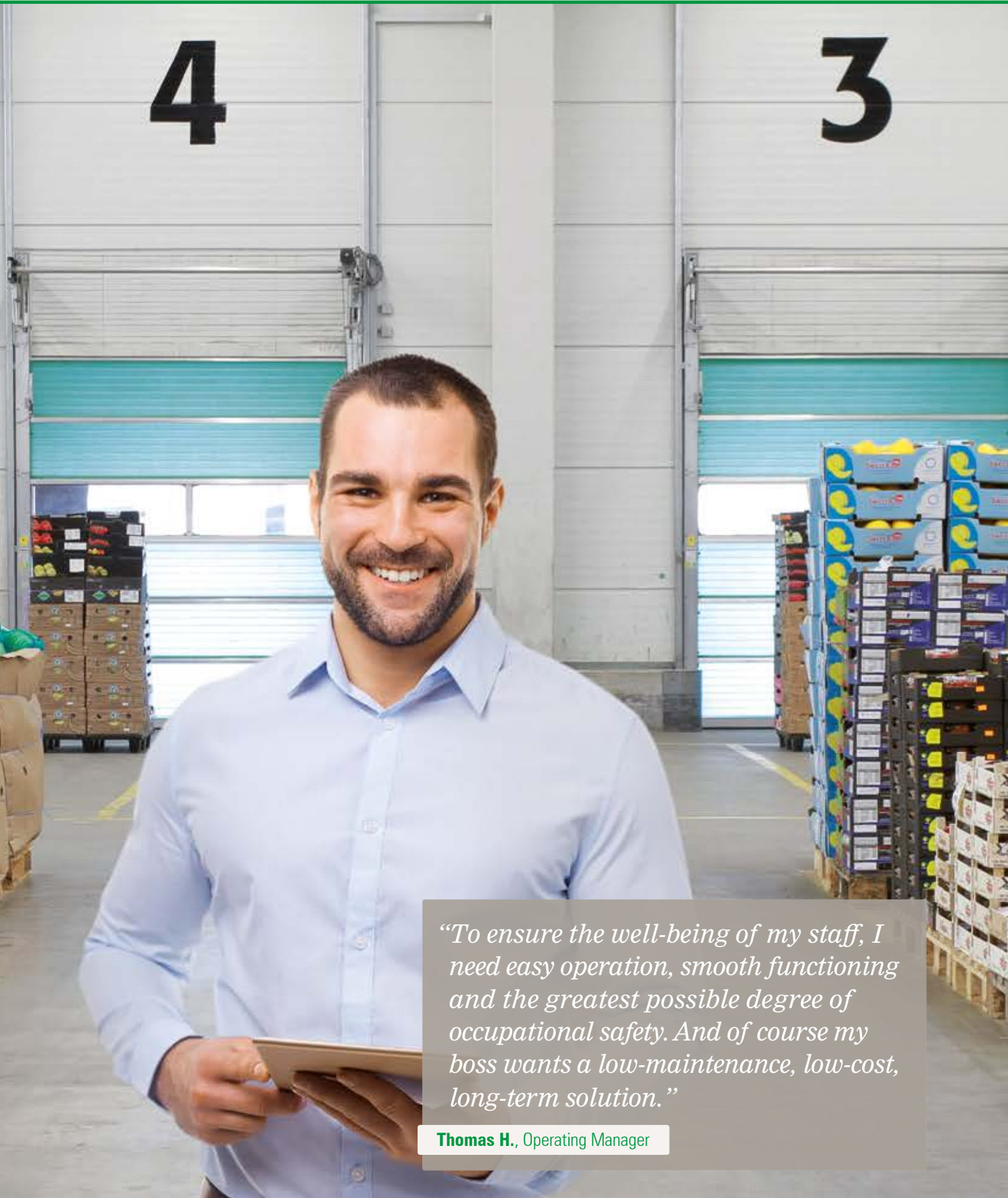
When opening, the door elements rise vertically and are compactly stored behind the lintel. The door is attached to the wall without suspension from the ceiling, thus rendering it suitable for almost any installation, both in new and renovated buildings.

You can find out more about the SPACELITE principle in our video.



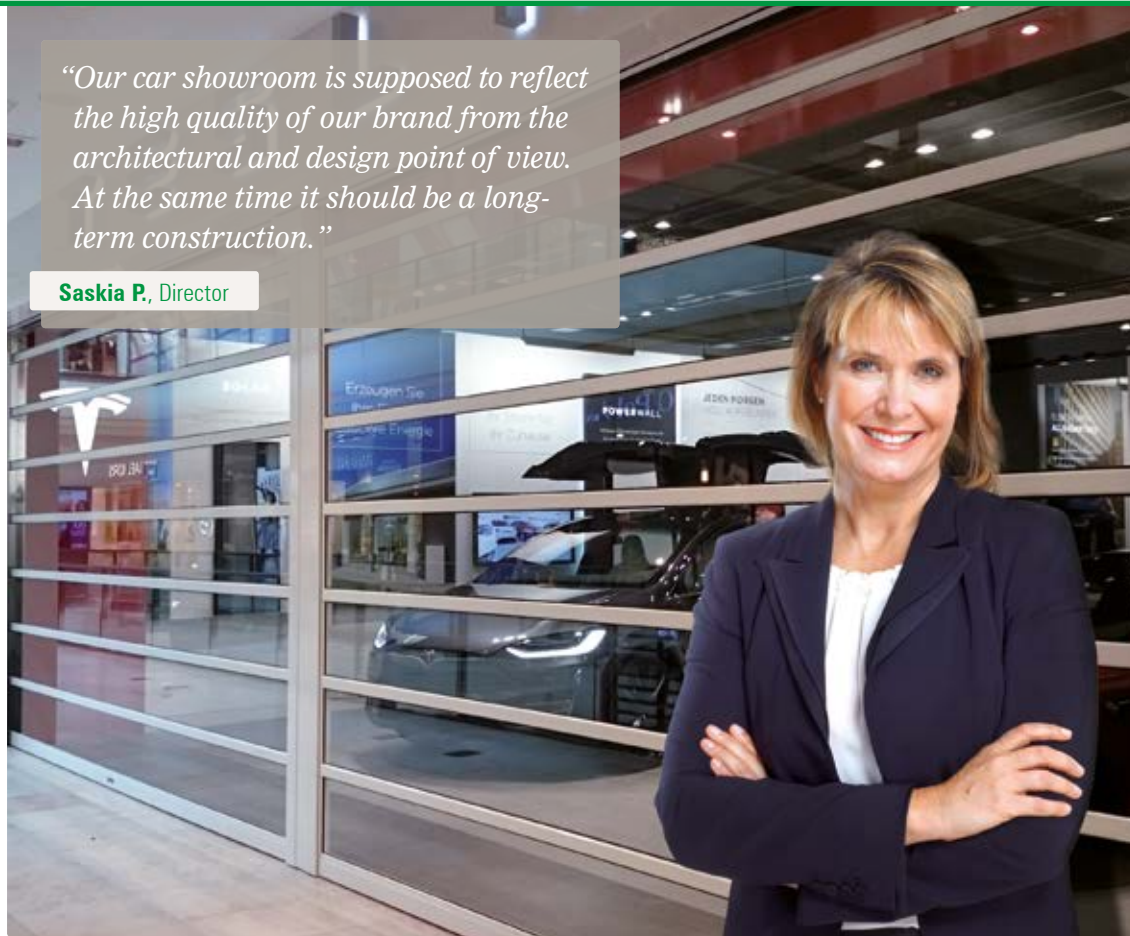
What should an industrial door provide?

The requirements vary a great deal



“To ensure the well-being of my staff, I need easy operation, smooth functioning and the greatest possible degree of occupational safety. And of course my boss wants a low-maintenance, low-cost, long-term solution.”

Thomas H., Operating Manager



“Our car showroom is supposed to reflect the high quality of our brand from the architectural and design point of view. At the same time it should be a long-term construction.”

Saskia P., Director



“Reliable functioning at all times at the press of a button. Add good light for maintenance and repair work in the vehicle workshops and you have quality that you can only find at Butzbach.”

Daniel R., Fire Brigade Commander

A convincing performance

Stacking doors **SPACELITE**[®] – individual solutions with real added value

Made in Germany ...

stands for triple quality at SPACELITE:

- **Intelligent door concept for increased service life**
- **Exceptional material quality**
- **German diligence and value added during manufacturing**

Allowing you fully to focus on your operating processes:
You can rely on functioning doors!



High economic efficiency



Extremely long life



Low running costs



No springs

What counts in the long run are costs and benefits.

SPACELITE supports efficient operating processes in the long term. The reliable direct drive includes no wearing components such as extension or torsion springs, thus minimising maintenance and wear. Save heating and lighting costs due to the effective door seal and the high light transmission. The result: a very positive cost/benefit balance.

Best operating conditions



Light transmission



Reduced temperature exchange



Efficient all-round sealing

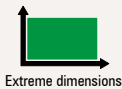
More light and a better indoor climate behind the door.

The fibreglass door panels allow plenty of light into the room, creating glare- and shadow-free lighting that penetrates deep into the room. The twin-walled panels and the all-round seal act as heat insulation in winter. They act as sun-block glazing in summer and even out temperature differences. This makes for ideal conditions for workshops, production buildings, vehicle showrooms or storerooms for UV- or temperature-sensitive products.

Maximum flexibility



Reduced lintel need



Extreme dimensions



External installation

SPACELITE is suited for the most difficult applications and installation situations.

SPACELITE has special wall attachments and therefore does not interfere with crane tracks, extraction facilities, lighting systems, lifting platforms and other ceiling installations. This facilitates the installation in a glass façade and other high-quality space solutions – for example installation in a hidden intermediate ceiling. XL formats as well as outside installation are further options that rely on the flexibility of SPACELITE.



Triple safety

The intelligent combination of design, materials and door technology makes SPACELITE a trendsetter in all aspects of safety.

User safety:

- Three-sides closed guide rails to avoid crushing and injury risks.
- Closing edge lock with immediate, automatic reversal.
- Radar sensor or camera-based system for contactless personal safety systems.
- Integrated, TÜV-approved falling protection.

Operating safety:

- Solid, surface-protected design made of steel and aluminium for permanently safe operation.
- Emergency door to ensure continued operation during a power failure.
- An active emergency function to meet the requirements of the safety authorities and organisations (BOS).
- Guide rail heating for winter operation in wet conditions, such as car washes.
- High resistance to corrosion ensures reliable functioning even in a corrosive environment.

Building safety:

- A solid construction, combined with fibreglass with high shock and impact resistance.
- Illuminated indoor spaces without direct transparency.
- Integrated anti-opening device.
- Optional anti-burglary system with resistance class WK3.

One door – innumerable options

This door type forms the basis for your individual solution

Each operation is unique. So are our SPACELITE doors.

The first step is to analyse your requirements during the course of a personal consultation, after which we will draw up your specific solution proposal. This is because at SPACELITE, your functional, size and design requirements determine the type of door you will be offered. In this way you get exactly the configuration that adds genuine market value for you – based on a multitude of equipment options, controllers, encoders as well as different model versions, material combinations and surface enhancements.



Door panels

Choose from a range of door panels, depending on the function and design: Twin-walled fibreglass panels in emerald green, sapphire blue and brilliant, acrylic discs, double insulation glazing or special panels such as perforated plates with individual patterns or laminated images (from left to right).



SPACELITE® HT40 — The individual door

The SPACELITE HT40 stacking door is our cutting-edge, traditional model and also the most cost-effective basic model with the most configuration options. Its elegant and striking design is based on the translucency of the fibreglass panels. The door is illuminated from the rear in a dark room and thus becomes an illuminated object!

Features

- Door sizes up to 5.50 m in width or 8.90 m in height.
- Door panels with heat-insulated twin-walled fibreglass panels, 40 mm thick.
- Light transmission up to 78% (depending on colour and heat insulation).
- Heat insulation up to $U_p = 1.4 \text{ W/m}^2\text{K}$.
- Optional panorama door panels with acrylic discs.

SPACELITE® HTvision — The designer door

Industrial doors often look out of place in showrooms and similar environments. If they are nevertheless required, SPACELITE HTvision is always a stylish choice, with real glass that is extremely resistant to scratches and wiping marks, without optical deformation. An elegant solution: The open door panels remain vertically staggered, thus meeting the regulations for overhead glazing.

Features

- Door panels with ESG insulation glass, heat insulation up to $U_g = 1.1 \text{ W/m}^2\text{K}$.
- Real-glass elements without vertical struts up to 3.96 m door width.
- Version with vertical struts in selected colours up to 5.0 m door width.
- Technical rules for linear-supported glass panels (TRLV) and DIN 18008-2 for overhead glass panels are fulfilled.

SPACELITE® HT60/HT80/HT150 — Extra-large doors

Low inherent weight, high stiffness and extreme breakage resistance make SPACELITE fibreglass doors an ideal choice, particularly for large door sizes. They also reliably withstand strong wind pressure in exposed locations, tunnels or production areas with high pressure differences.

Features

- Door sizes up to 15 m in width or 16 m in height.
- Door panels with heat-insulated twin-walled fibreglass panels – 60, 80 or 150 mm thick, door panel height approx. 500 mm or approx. 1,000 mm.
- Heat insulation up to $U_p = 0.83 \text{ W/m}^2\text{K}$.
- Optionally integrated viewing windows.
- Anti-burglary version (resistance class WK3) possible for SPACELITE HT150.

Room for special requests

Configuration options allow **SPACELITE®** to meet your needs



Humid or wet environments –

Consistently reliable under extreme conditions

SPACELITE HT40 with an additional equipment package also withstands conditions that occur, for example, in car wash systems reliably and throughout the year. It looks the same as the standard version and thus perfectly contributes to an integrated building design.

Features

- Reliable protection against corrosion, water jets and dust.
- Components in VA stainless steel or hot-galvanised versions.
- Additional sealing of fibreglass plates, door panels and controls.



Heat insulation –

a combination of functionality and sustainability

Do you have high requirements for protection against the cold? We will then provide the SPACELITE with additional insulation, both in the chambers of the twin-walled fibreglass panels and in the door panels. Improved insulation efficiently prevents draughts.

Features

- For all SPACELITE stacking doors and fibreglass thicknesses.
- Sealing also possible with higher tightness requirements.
- High light transmission even with additional fibreglass insulation.



Movable guide rail

The easy way to achieve double width

Two doors can form a double-door system to provide optimal driving width. A movable guide rail is located between the two doors. It can easily be manually moved to the side and thus opens to almost double the normal opening width.

Features

- For SPACELITE stacking doors of all sizes.
- Easy operation



Laminated motifs –

Illuminated advertising on your door

We make the fibreglass panels in-house and can therefore laminate individual motives directly into the fibreglass. This enables you to use a unique design for your company building at night, as each door turns into a lit signboard.

Features

- Using images for advertising purposes.
- Individual version.



Combination –

Combinable protection for high-traffic external doors

The “hybrid” option is recommended where there are large differences between hours of operation and non-working hours. It combines the fast and extremely rugged NOVOSPRINT high-speed door with the well-insulated SPACELITE external door. When things are at their busiest, only the high-speed door is active. In non-working hours, SPACELITE both protects the building and offers ideal heat insulation.

Features

- Minimises heat losses and draughts.
- Hard-wearing and reliable, even under high-traffic conditions.
- Safe building closure during unattended time.



External installation –

Whenever there is no more space on the inside.

Some applications simply do not have any space left on the inside for installing a door. SPACELITE provides a unique solution in such cases: The entire door construction can be fitted on the outside of the building.

Features

- For SPACELITE stacking doors of all sizes.
- No internal space required.
- Individual roofing solutions.

Room for special requests

Configuration options allow **SPACELITE**® HT to meet your needs



Side panel – A stylish way to widen a door

The building façade next to the door can be visually continued by a side element made of fibreglass to ensure a consistent design. We can provide a swivel-mounted side panel to provide a wider access road in exceptional cases.

Features

- Lateral extension of the door surface.
- Swivel-mounted or fixed.
- Optionally integrated pedestrian door.



Lateral door element –

Safety for pedestrian and vehicle traffic

Separate access routes are the best way to keep persons and vehicles apart. However, the material and design are matched to each other to ensure that the building appears integrated.

Features

- Individual door fittings.
- With or without skylight.

Increased anti-burglary measures

The protection of persons and goods and the securing of buildings also depend on the performance characteristics of industrial doors. We offer several break-in-resistant door types in Resistance Class 3 according to DIN V ENV 1627. Butzbach therefore offers an excellent preventative option against theft and consequential damage resulting from a burglary.

All our standard versions are characterised by integrated components for burglary protection. All stacking doors SPACELITE have lift-out protection and are well-protected against attacks by fibreglass, an impact-resistant material.



Proven in practice

Our customers have trusted in **SPACELITE®** for over 30 years



STIB Brussels transport services:

Renovation of an existing building with different SPACELITE HT40/HT80 doors using the wet room option for the bus-washing hall. With fibreglass façade, Butzbach VARIOPLANplus system.



Customer: VBK Public transportation services
Location: Karlsruhe
Products: SPACELITE HT40



Customer: Technological center (Leitfabrik)
Location: Dingolfing
Products: SPACELITE HT40



Customer: SAR Sea rescue
Location: Karup, Denmark
Products: SPACELITE HT150



Customer: Car dealership MK Maring
Location: Braunschweig
Products: SPACELITE HTvision

A partner throughout the product's service life

Our goal: to help your operations run smoothly



What matters most to us is the trust of our customers.

A stacking door SPACELITE does not come on its own. That's because we partner you throughout its life cycle. This begins with the consultation and planning process for your individual door solution, but it does not stop after installation. Our ultimate aim is to ensure the smoothness of your operations across the entire life of the product. To that end we offer a comprehensive package of services for maintenance and safety inspection, rapid repair in the event of incidents and guaranteed spare parts availability for many years to come.

At Butzbach, a forward-thinking approach and traditional values go hand in hand. We are not just one of the world's leading specialists in door and façade systems: we are also a family-owned SME that has stood for quality and reliability for over 60 years. That is why we manufacture solely in Germany, at two locations between Stuttgart and Munich. And this is

why, from development through to service, we rely only on permanent staff who know our products inside out.

When you decide to opt for a Butzbach door solution, you will always be on the safe side – promised!

The Butzbach promise:

Intelligent

Intelligent: Good isn't good enough for us. **We listen closely to our customers in order to understand their requirements.** And we have only completed our task when we have found a solution that takes them forward – technically as well as economically.

Professionell

Professional: As a direct supplier, our staff provide **100 % commitment at every stage of our service.** That means that our customers always have dedicated and highly qualified contacts by their side – from planning to assembly to servicing.

Solide

Solid: Since 1953 the name Butzbach has stood for German brand quality in the best sense of the term: In line with the latest technology, reliable in function and of sustainable value. **Guaranteed.**

Dates and facts

The **SPACELITE**[®] range at a glance

Characteristic/ door type		SPACELITE [®] HT40	SPACELITE [®] HTvision	SPACELITE [®] HT60/HT60XL	SPACELITE [®] HT80/HT80XL	SPACELITE [®] HT150/HT150XL
Performance data	Designed for ... opening cycles a year	50,000	30,000	30,000	30,000	30,000/15,000
	Short-term operation: opening cycles per hour	20	10	10	10	On request
	Wind load according to EN 12424	Class 2–4	Class 2–4	Class 2–4	Class 2–4	Class 2–5
	Air permeability according to EN 12426	Class 3	Class 3	Class 2	Class 2	Class 2
	Impermeability to driving rain according to EN 12425	Class 2	Class 2	Class 2	Class 2	Class 2
	Airborne sound insulation according to EN ISO 717-1	21 dB		23 dB	25 dB	
	Opening speed up to	40 cm/s	25 cm/s	14 cm/s	14 cm/s	10 cm/s
	Operating forces/Safe opening according to EN 13241-1	fulfilled	fulfilled	fulfilled	fulfilled	fulfilled
Door size	Width min./max.	1,000/5,500 mm	1,000/5,000 mm	1,000/7,500 mm	2,000/10,000 mm	2,000/15,000 mm
	Height min./max.	2,000/8,920 mm	2,000/4,000 mm	2,000/13,000 mm	2,000/16,000 mm	2,000/16,000 mm
	Height of individual door panel	500 mm	500 mm	5000/1,000 mm	1,000 mm	1,000 mm
Material	Twin-walled fibreglass panels, thickness in mm	40 mm		60 mm	80 mm	150 mm
	Real glass 2x4 mm ESG, (up to 3.96 m without vertical struts, up to 5.0 m with 1-2 vertical struts)	24 mm	24 mm	–	–	–
	Insulation value Up (fibreglass)/Ug (real glass)	1.4 W/m ² K	1.1 W/m ² K	1.1 W/m ² K	1.1 W/m ² K	0.83 W/m ² K
	Light transmission up to	47–78 %	0.82	47–78 %	41–75 %	20–55 %
	Fire behaviour according to EN 13501/ Fire rating according to DIN 4102	E/B2	E/B2	E/B2	E/B2	E/B2
	Panoramic perspex door panel / ESG single-pane-glass/ special insert/inspection window made of insulating glass	□	□	□	□	
	Guide rails made of mill-finished aluminium	■	■	■	■	■
	Steel door console, galvanised	■	■	■	■	■ or primed
Drive/ controls	G geared motor with integrated, TUV-certified guardrail	■	■	■	■	■ or hydraulic drive
	Relay/contactor control 400 V/50 Hz, BDC E800R/S	■	■	■	■	■
	Frequency converter control 230 V/50 Hz, BDC E800F	□	□	–	–	–
	Emergency opening with manual crank	■	■	–	–	–
	Emergency opening with chain hoist	□	□	■	■	■
	Emergency opening with USV system (BOS)	□	□	□	□	□
Options	Wet room/Humid environment (e.g. car wash)	□	□	□	–	–
	Removable guide track	□	□	□	□	□
	Laminated motif	□	–	□	□	□
	Combination with NOVOSPRINT high-speed door	□	–	□	–	–
	External installation (with roofing)	□	□	□	□	□
	Side panel (fixed or swivel-mounted, with or without door)	□	□	□	□	□
	Door element	□	□	□	□	□

■ Standard; □ Optional;

Figures may vary according to size, application and equipment.

The doors shown in this brochure may include special accessories. Subject to technical changes.

Our other business sectors



Sectional doors **SECTIOLITE**

- High opening speed, can be combined with additional optional functions.
- Light-transmitting fibreglass panels deliver the best working conditions in the building.
- Safe, reliable and economic operation.



High-speed doors **NOVOSPRINT**

- Opens sideways for twice the speed and significantly enhanced safety.
- Up to 350,000 operations per year: Developed for heavy-duty operation and high frequency.
- Pioneering with regard to service life, reliability and efficiency.



Fibreglass curtain walls **VARIOPLANplus**

- Innovative material combination: Aluminium frame structure with fibreglass panels.
- High light transmission, low inherent weight, very good heat insulation properties and an outstanding service life.
- Light and lightness: Exceptional application options, physical properties and visual appearance.



Sliding doors **HANGAR DOORS**

- One hundred per cent reliability and operating safety.
- Translucent fibreglass panels deliver the best light conditions.
- Individual project support from the first sketch to delivery and during operation.



Stacking Door **SPACELITE®** HT 80 - 200

BUTZBACH
MADE IN GERMANY



Made in Germany

Unique Technology

Translucent Fibreglass

Extraordinary opening principle

Door widths and heights up to 25 m

Safe and reliable

Lasting durability

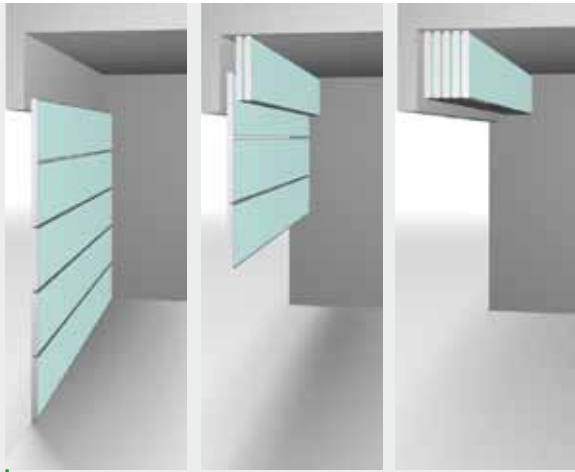
Package from a single source: R&D - Sales -
Manufacturing - Installation - Service

Extraordinary Material

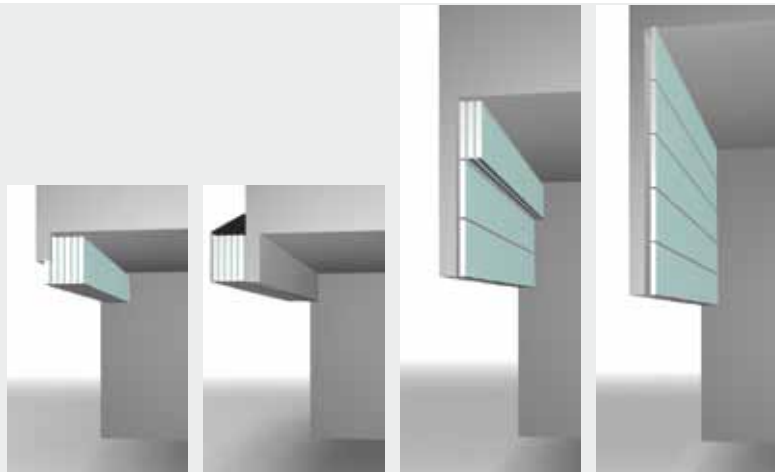


We use fibreglass door fillings in our stacking doors, a material used in shipbuilding and aerospace engineering due to its versatility, durability and sturdiness.

Fibreglass also has a translucence of up to 78 %, enabling bright, pleasant working environments and a subsequent reduction in lighting expenses.



Upon opening, the door panels stack safely and compactly behind the lintel where they are protected. Lighting devices, lifting platforms and other fittings on the ceiling are not impaired.



Installation with lintel cover Outside installation Extended guide tracks Vertical lifting door tracks

For applications with limited space various installation options are available.

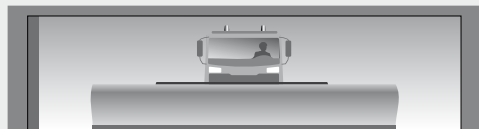
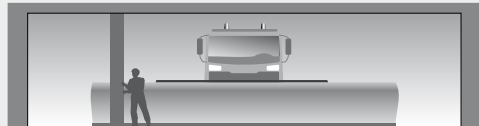


Translucent fibreglass doors allow bright, pleasant working environments as well as outstanding optical appearance.

The twin-walled design of the fibreglass element enables excellent thermal insulation; a complete seal prevents unnecessary energy loss and draught.

The robust door material is resistant and absorbs impact. Our stacking doors are weather and corrosion resistant, making them suitable for harsh environments.





Movable tracks enable extremely wide opening widths.



The integrated smaller stacking door is perfectly suitable for fast traffic flow of smaller vehicles.



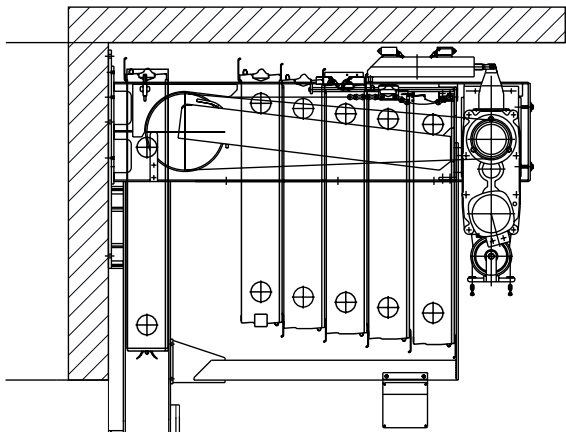
The integration of pedestrian doors as well as on outside installation of the doors is easily possible.



Moveable side parts allow the utilization of the entire opening in the building. Also big side parts, even with integrated doors, can be easily opened by swiveling or pushing.

Another option is the moveable track. The moveable side track allows the utilization of the entire opening width at several doors installed next to each other.

The combination of numerous Butzbach doors creates homogeneous building designs.



Stability enhances safety: Solid tracks as well as highly resistant fibreglass panels prevent from burglary.

The sturdy design supports a very low air permeability und avoids unnecessary loss of heating energy.



We have refrained from using hinges, curly cables, ropes and springs, which are prone to interference in operations and thus, we have minimized the necessity for constant service, preventing subsequent extra costs.

Numerous testing procedures as well as highly precise manufacturing process are substantial part of the manufacturing of our big doors.

The bigger the door surface area, the more wind load has to be absorbed by the door. Design and materials used in the stacking doors proof reliable function even in extreme situations.

The solid guide track grants maximum possible reliability and safety, since all important functional components are integrated and therefore sheltered. Additional safety features like anti-jamming device, safety edge or emergency operation are integrated.







Stacking doors



Sectional doors



XXL doors



High-speed doors



Mobile partition walls



Sliding doors



Façade systems



Service

Quality and All Encompassing Service

We guarantee distinct quality and longevity in our customised door solutions, having had over 30 years of experience in development, designing, manufacturing, assembling and after sales service.

Butzbach employees operate according to the motto: "Everything from a single source".

In providing all the service and support you will need, we can ensure that you will be completely satisfied.

At Butzbach, service starts with consultation. Our focus is on in-depth and constructive dialogue with our customers. Our team of consultants create individual door solutions efficiently, competently and according to your specification and needs. You will be assigned a personal contact who will work with you for the entirety of the project. Your contact knows your individual specifications and can thus, react to changing requirements.

Our installation and service stations are located throughout Germany, so we can guarantee quick and costefficient service. Please contact us to find out about special service and maintenance offers available now.

Butzbach GmbH
Industrietore
Robert-Bosch-Strasse 4
89257 Illertissen (Germany)

Tel. +49 (0) 73 03 / 9 51 - 0
Fax +49 (0) 73 03 / 95 14 70
info@butzbach.com
www.butzbach.com

BUTZBACH
MADE IN GERMANY